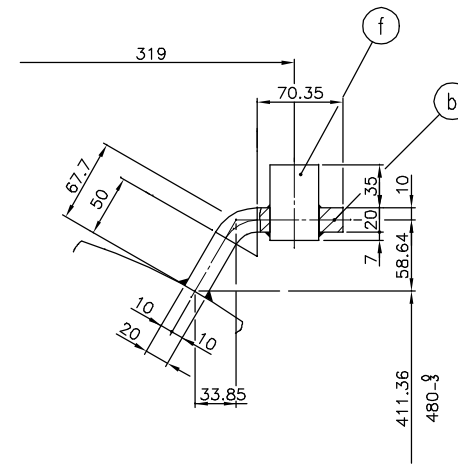
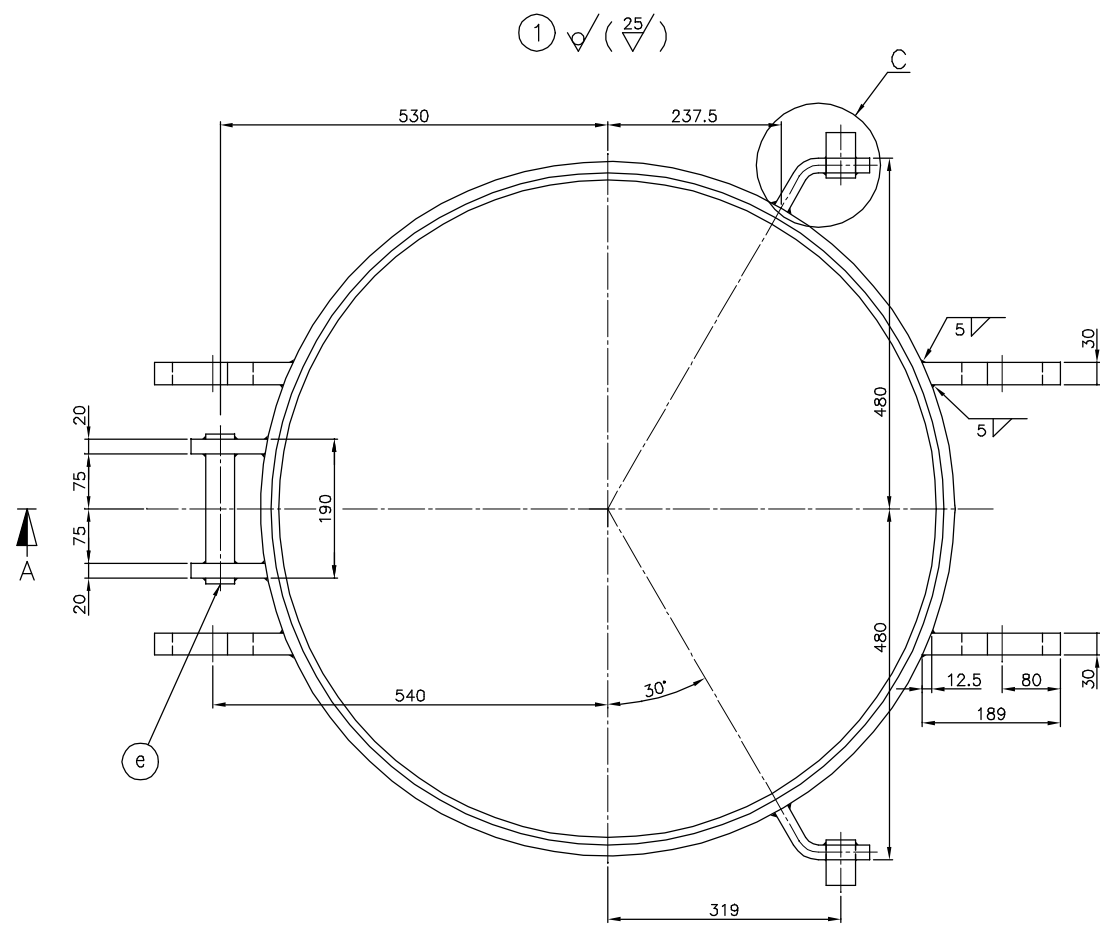
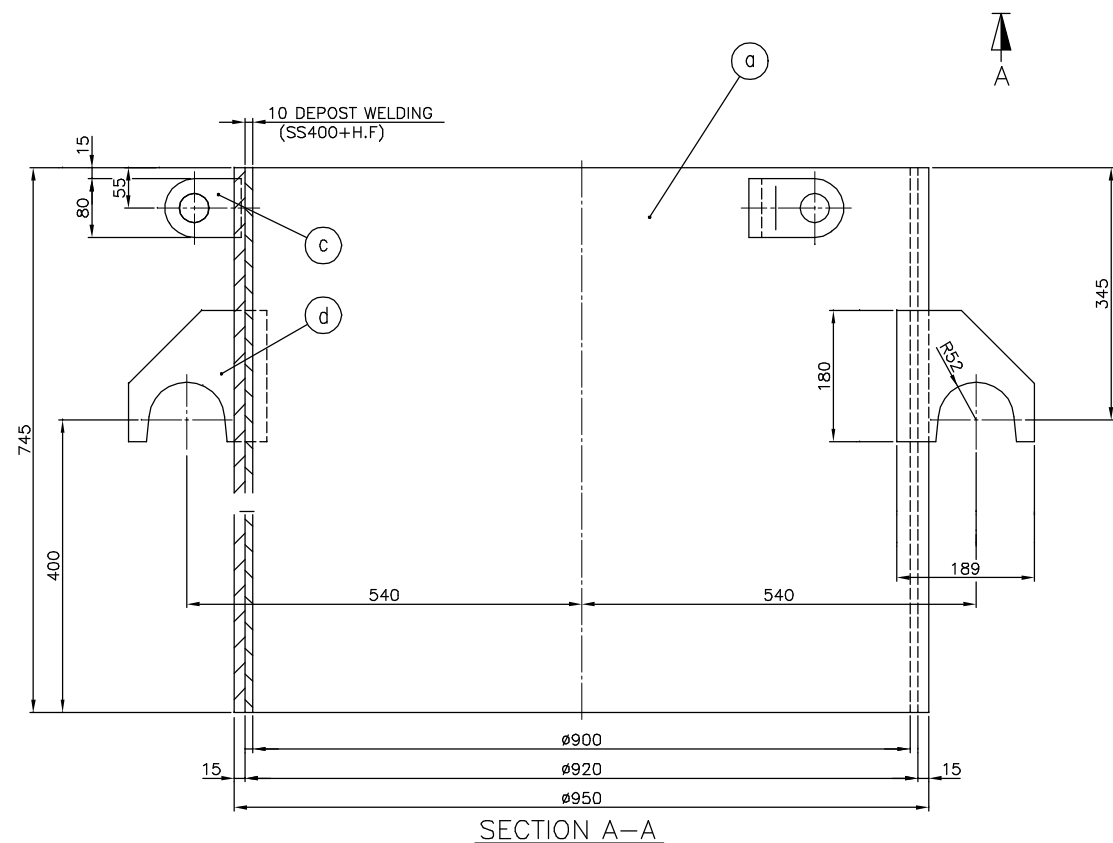


KSB ISO 2768-1		KSB 0161, 0507, 0617							
		0.5	0.6	0.8	1.0	1.6	2.5	4.0	6.3
Ra	0.4	0.5	0.6	0.8	1.0	1.6	2.5	4.0	6.3
Rmax	0.45	0.6	0.8	1.0	1.6	2.5	4.0	6.3	10

NO.	DESCRIPTION	MAT'(KS)	QUANTITY		WEIGHT(KG)		REMARKS
			UNIT	TOTAL	PER UNIT	TOTAL	
1	FEEDER SPOUT		1			299.4	
a	PLATE t15x745x2937	SS400+H.F.	1		257.6		H/F; 10t
b	PLATE t20x80x152	SS400	2		2	4	
c	PLATE t20x80x105	SS400	2		1.3	2.6	
d	PLATE t30x180x189	SS400	4		8	32	
e	PIN ø40x205L	SS400	1		2		
f	PIN ø40x62L	SS400	2		0.6	1.2	



DETAIL C (s=1/3)



SECTION A-A

HARD FACING		
MATERIAL	HARDNESS	STOCK NO.
TRIMAY-165	HS 88	

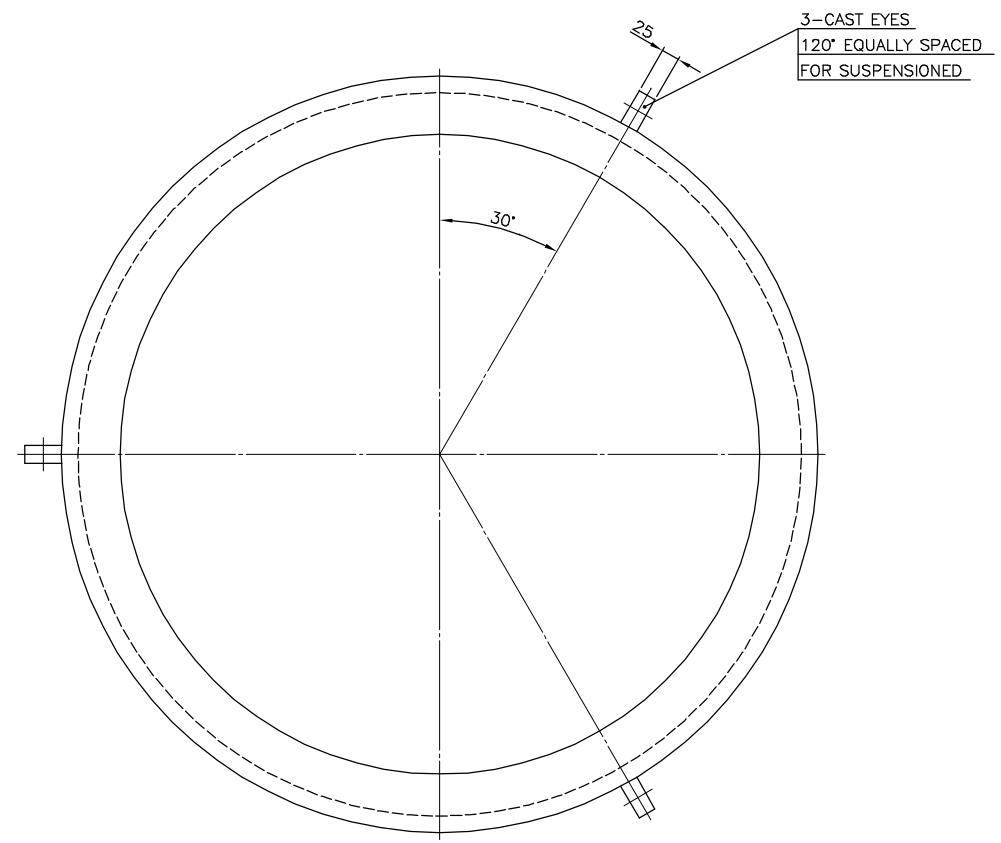
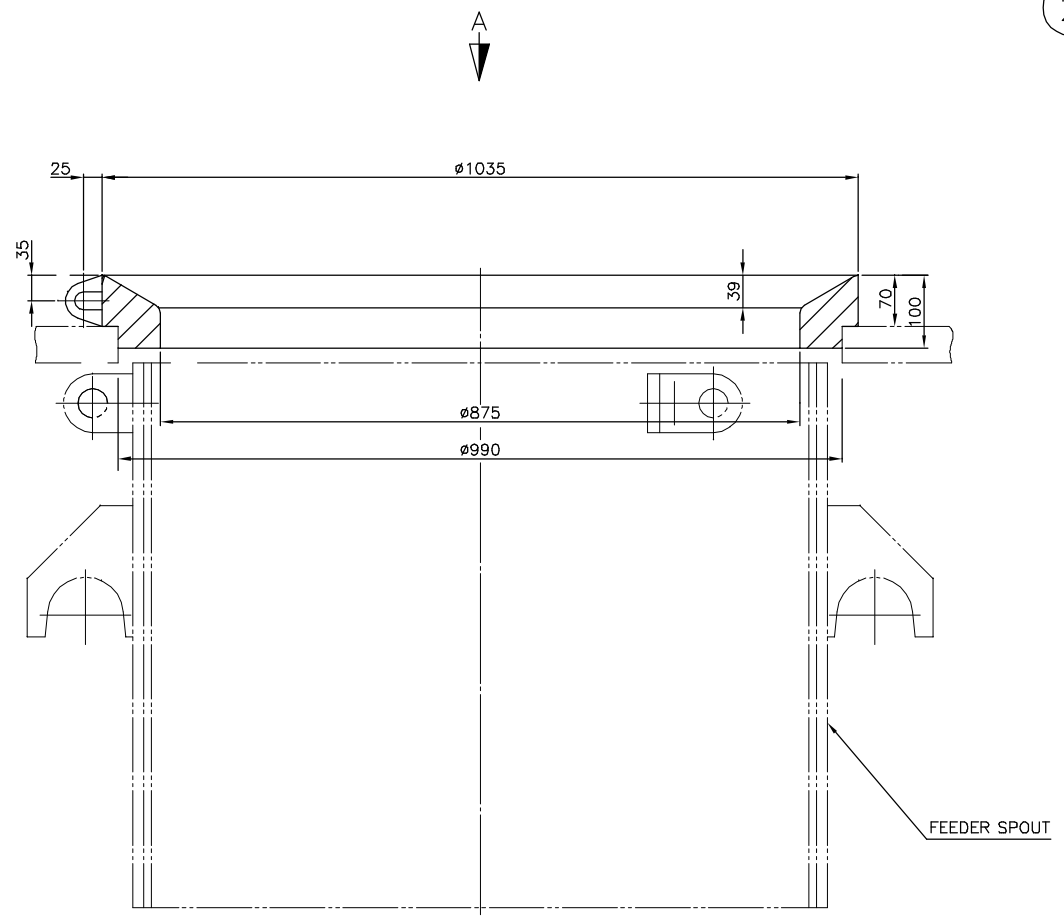
NO.	DATE	REVISION & DESCRIPTION	DRAWN	CHECKED	REVIEWED	APPROVED	TITLE	SCALE	PROJECTION	ITEM MODEL NO.	MAKER DWG. NO.
1	24.11.20	FOR REFERENCE	S.C.PARK	-	O.R.SONG	K.S.SONG	HOPPER SYSTEM GAS SEAL HOPPER DETAIL OF FEEDER SPOUT FOR FLAP GATE	1/5	AT	FSP-FG01-001	214-M33-D7040
FINE INC. (주) 파인 FINE INC								DRAWN	CHECKED	REVIEWED	APPROVED
								S.C.PARK	-	O.R.SONG	K.S.SONG
								24.11.20	-	24.11.20	24.11.20

???		???										??											
KSB ISO 2768-1		KSB ISO 2768-1										KSB 0161, 0507, 0617											
	0.5	6	30	120	400	1000	2000																
	~ 6	~ 30	~ 120	~ 400	~ 1000	~ 2000	~ 4000																
	±0.1	±0.2	±0.3	±0.5	±0.8	±1.2	±2.0																
	0.4S	0.8S	1.6S	3.2S	6.3S	12.5S	25S	50S	100S														
	▽	▽	▽	▽	▽	▽	▽	▽	▽														

NO.	DESCRIPTION	MAT(KS)	QUANTITY		WEIGHT(KG)		REMARK'S
			UNIT	TOTAL	PERUNIT	TOTAL	
2	WEAR RING	Hi-Cr		1		188	25CrFC 경도; HS 78 이상

A
B
C
D
E
F

② ✓



Hi-Cr Specification			
C	Si	Cr	Mo
2.0~3.5%	0.5~1.5%	18~26%	0.3~1.0%

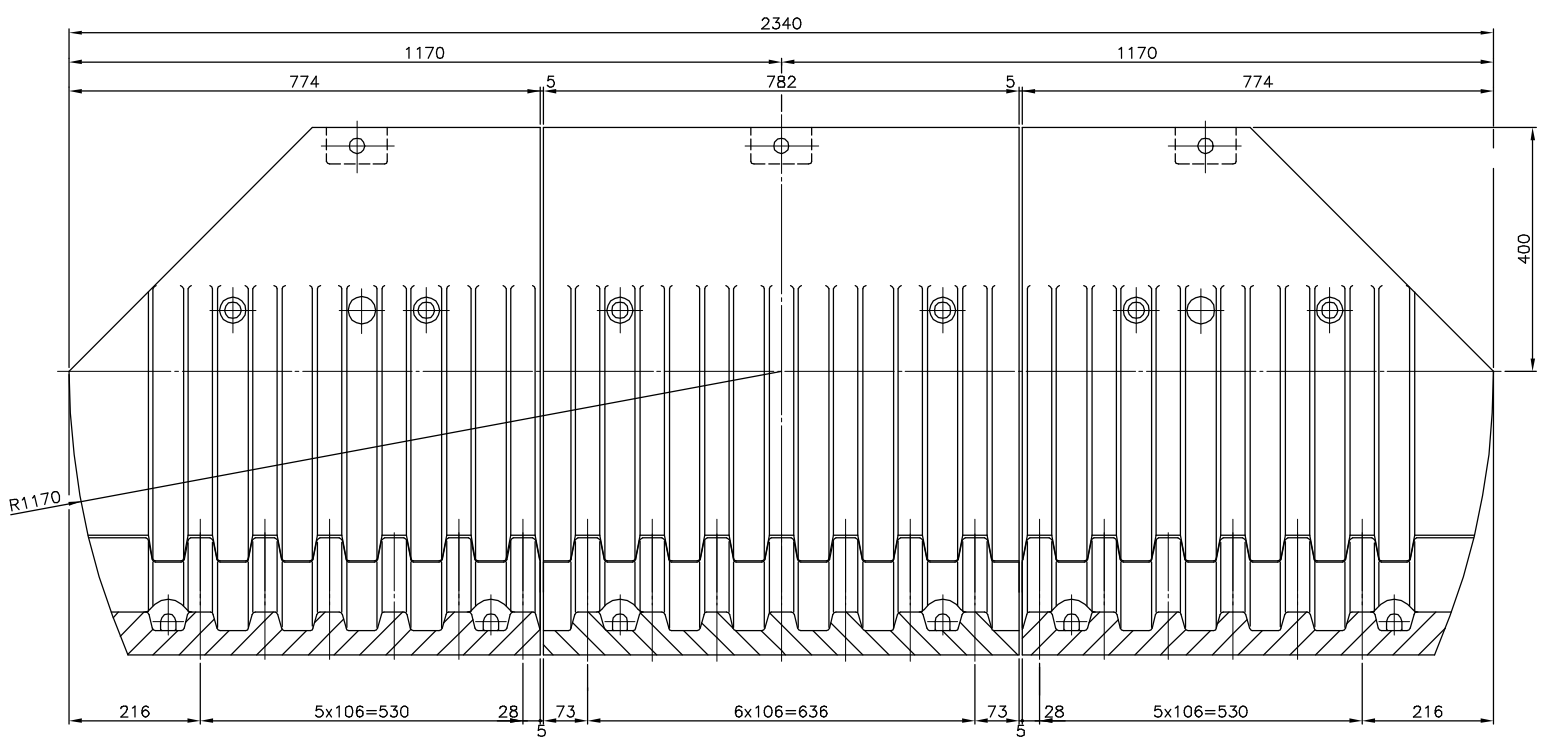
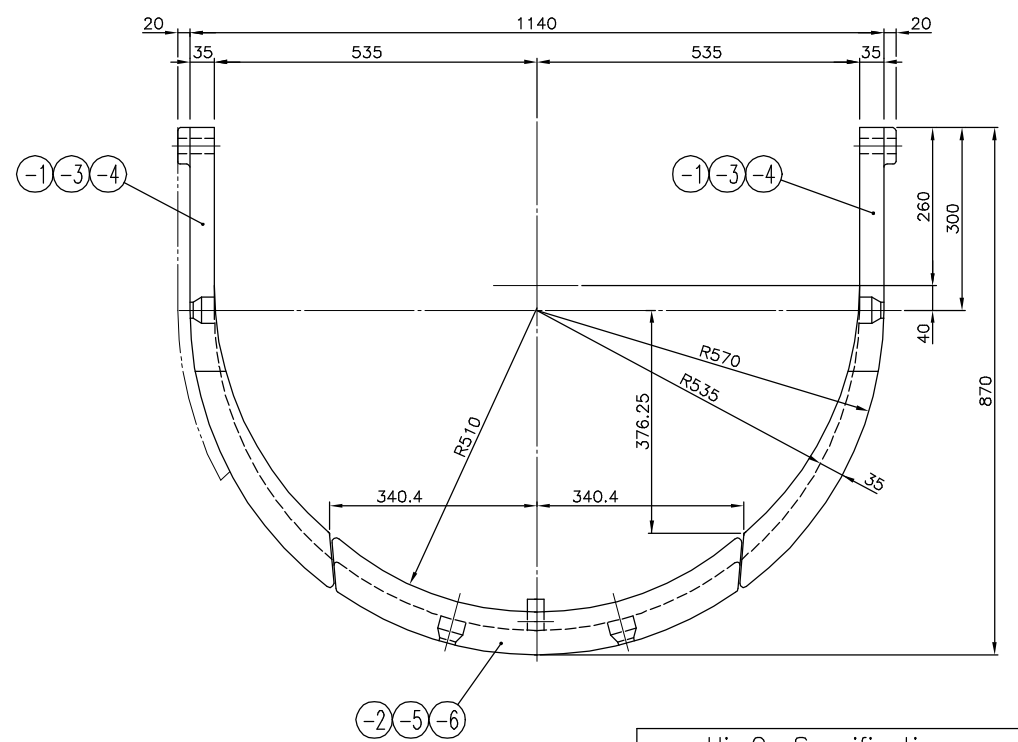
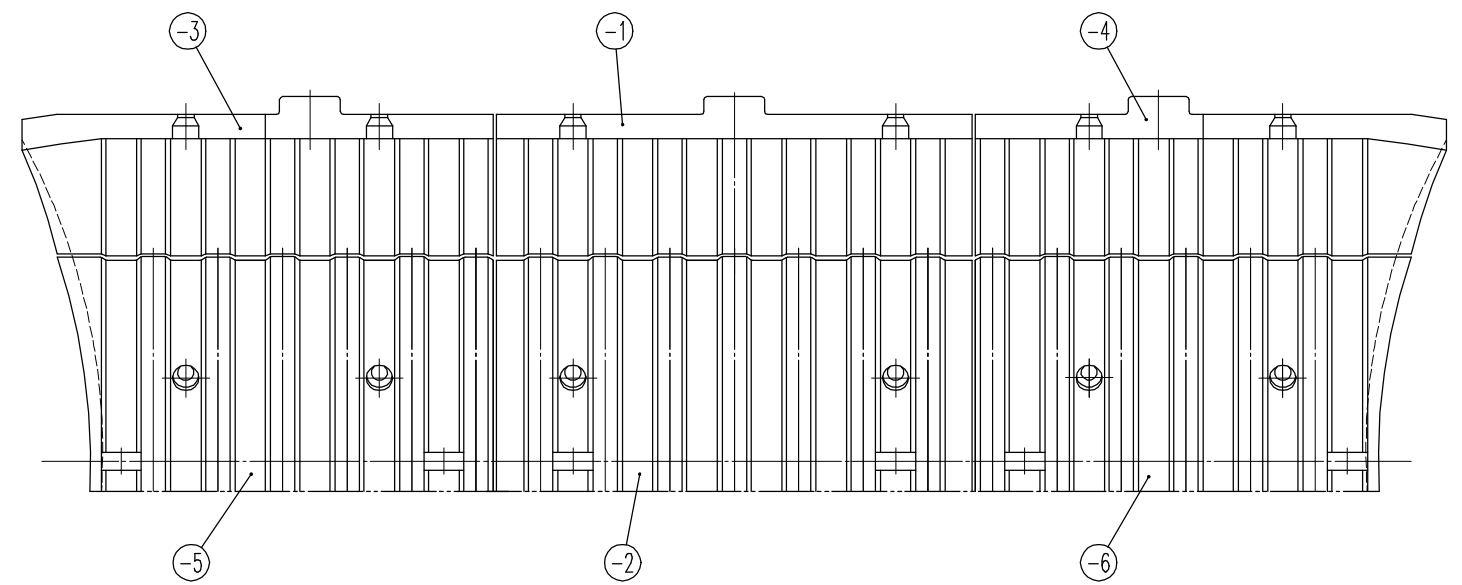
VIEW A

						SCALE	1/5	PROJECTION	☺														
						SIZE	A1	DIMENSION	mm														
						TITLE	HOPPER SYSTEM GAS SEAL HOPPER DETAIL OF WEAR RING FOR FLAP GATE																
						PLANT	G2R2																
						REVISION & DESCRIPTION	DATE	DRAWN	CHECKED	REVIEWED	APPROVED												
						FOR REFERENCE	24.11.20	S.C.PARK	-	O.R.SONG	K.S.SONG												
									<table border="1"> <tr> <td>DRAWN</td> <td>CHECKED</td> <td>REVIEWED</td> <td>APPROVED</td> </tr> <tr> <td>S.C.PARK</td> <td>-</td> <td>O.R.SONG</td> <td>K.S.SONG</td> </tr> <tr> <td>24.11.20</td> <td>-</td> <td>24.11.20</td> <td>24.11.20</td> </tr> </table>			DRAWN	CHECKED	REVIEWED	APPROVED	S.C.PARK	-	O.R.SONG	K.S.SONG	24.11.20	-	24.11.20	24.11.20
DRAWN	CHECKED	REVIEWED	APPROVED																				
S.C.PARK	-	O.R.SONG	K.S.SONG																				
24.11.20	-	24.11.20	24.11.20																				
						ITEM MODEL NO.	FSP-FT-FG01-001																
						MAKER DWG. NO.	214-M33-D7050																

???		???										??										
???		KSB ISO 2768-1										KSB 0161, 0507, 0617										
???		0.5	6	30	120	400	1000	2000	Ra	0.4	0.8	1.6	3.2	6.3	12.5	25	50	100	200	400	800	1600
???		±0.1	±0.2	±0.3	±0.5	±0.8	±1.2	±2.0	Rmax	0.4S	0.8S	1.6S	3.2S	6.3S	12.5S	25S	50S	100S	200S	400S	800S	

NO.	DESCRIPTION	MAT'(KS)	QUANTITY		WEIGHT(KG)		REMARK'S
			UNIT	TOTAL	PER UNIT	TOTAL	
3	WEAR PLATE ASS'Y		1	SET		1834	
-1	WEARING PLATE	Hi-Cr	2		215	430	25CrFC
-2	WEARING PLATE	Hi-Cr	1		236		25CrFC
-3	WEARING PLATE	Hi-Cr	2		185	370	25CrFC
-4	WEARING PLATE	Hi-Cr	2		185	370	25CrFC
-5	WEARING PLATE	Hi-Cr	1		208		25CrFC
-6	WEARING PLATE	Hi-Cr	1		208		25CrFC
-7	SPECIAL HEAD BOLT	M24x85L	SCM440	24	0.5	12	
-8	HEX. NUT	M24	SM25C	24			
-9	FLUSH WASHER 24		STC5	24			

3 WEAR PLATE ASS'Y



C	Si	Cr	Mo
2.0~3.5%	0.5~1.5%	18~26%	0.3~1.0%

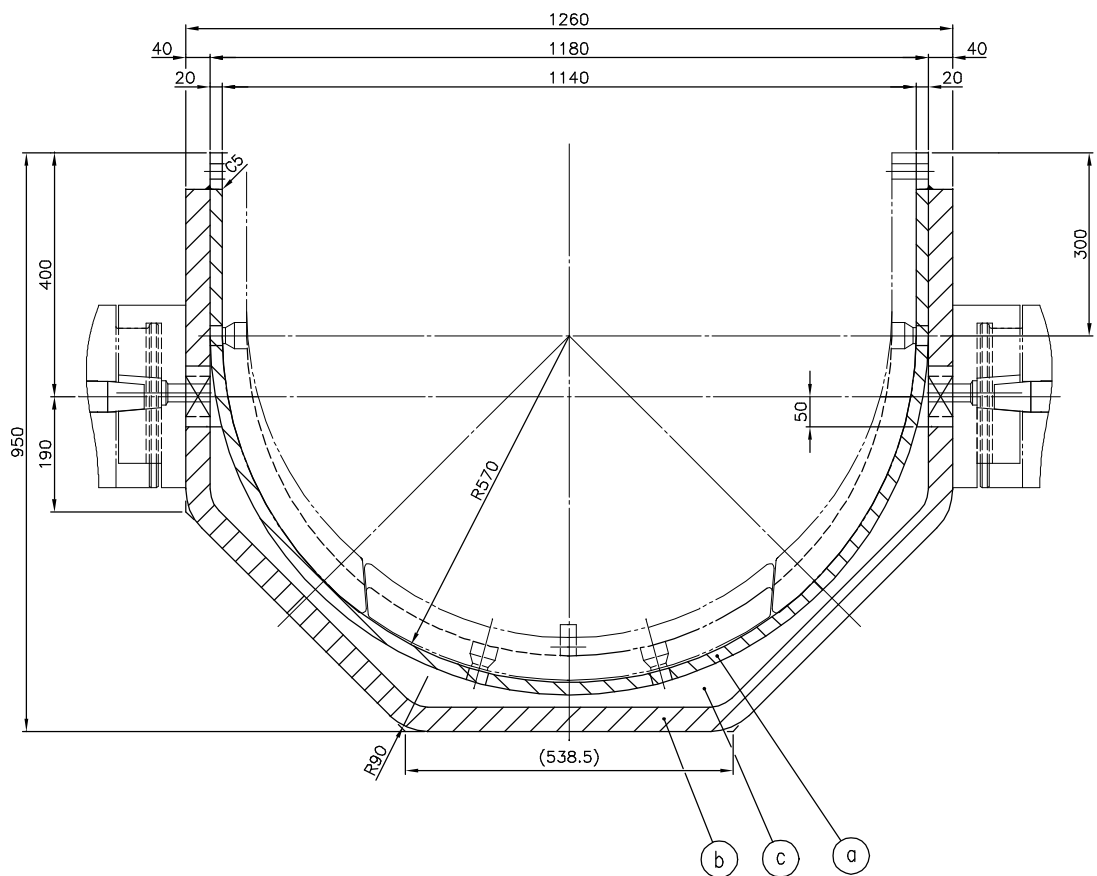
24.11.20		FOR REFERENCE	S.C.PARK	-	O.R.SONG	K.S.SONG	TITLE	???	PLANT	HOPPER SYSTEM	SCALE	1/6	PROJECTION	1st
24.11.20		REVISION & DESCRIPTION	DRAWN	CHECKED	REVIEWED	APPROVED	???	FACTORY	GAS SEAL HOPPER	WEAR PLATE ASS'Y FOR DISTRIBUTION ROCKER	SIZE	A1	DIMENSION	mm
											ITEM	FSP-FT-FG01-001		
											MAKER	214-M33-D7060		
											DWG. NO.			



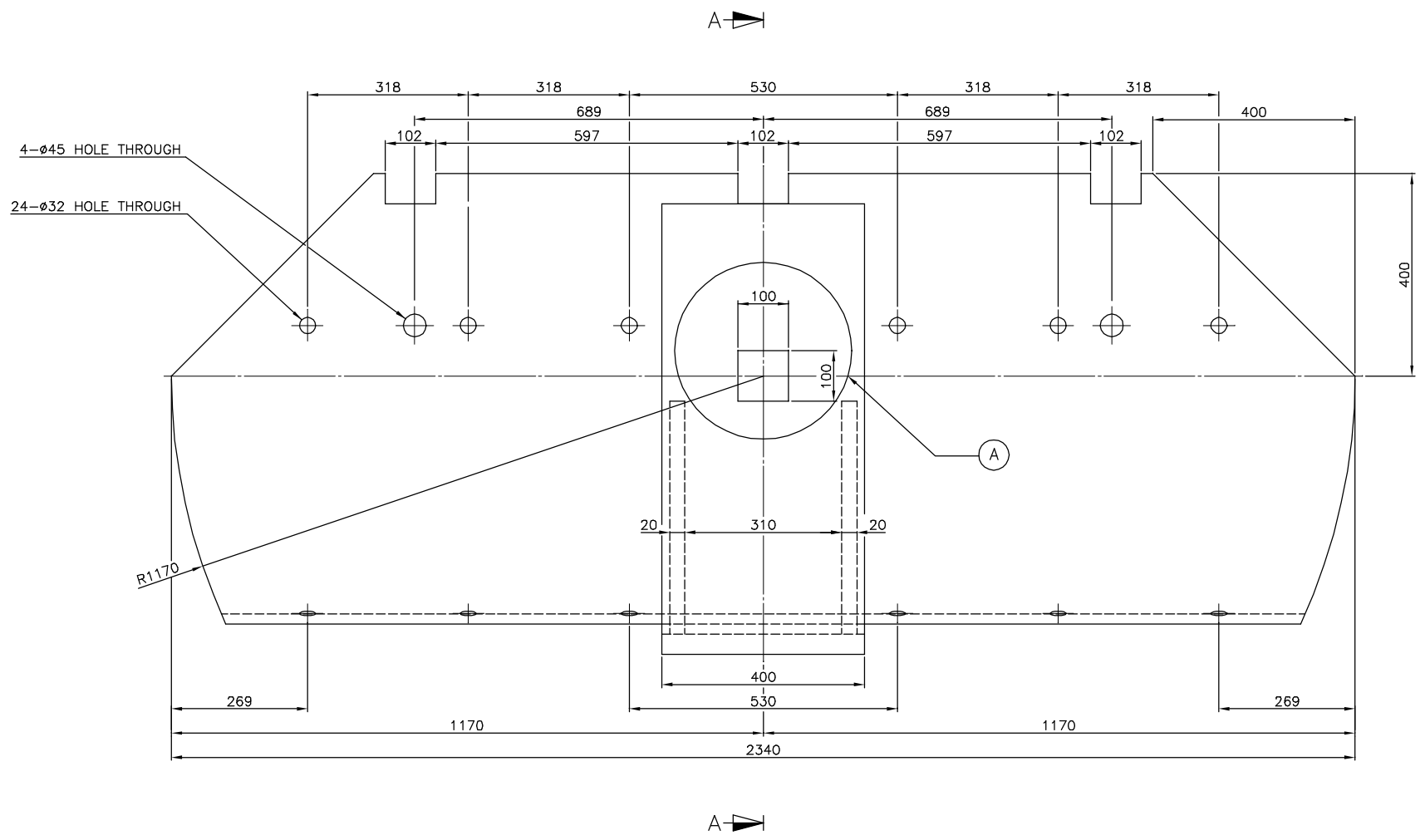
???										???										KSB ISO 2768-1										KSB 0161, 0507, 0617																																																																					
Ra										0.4										0.8										1.6										3.2										6.3										12.5										25										50										100									
Rmax										0.45										0.85										1.65										3.25										6.35										12.55										25.5										50.5										100.5									
???										???										???										???										???										???										???										???										???										???									

NO.	DESCRIPTION	MAT.(KS)	QUANTITY		WEIGHT(KG)		REMARK'S
			UNIT	TOTAL	PER UNIT	TOTAL	
4	CASING FOR ROCKER	SS400		1		1188	
a	PLATE t20x2340x2430	SS400		1	810		
b	PLATE t40x400x2539	SS400		1	318		
c	PLATE t20	SS400		2	30	60	

④ √ (25/6.3)



SECTION A-A

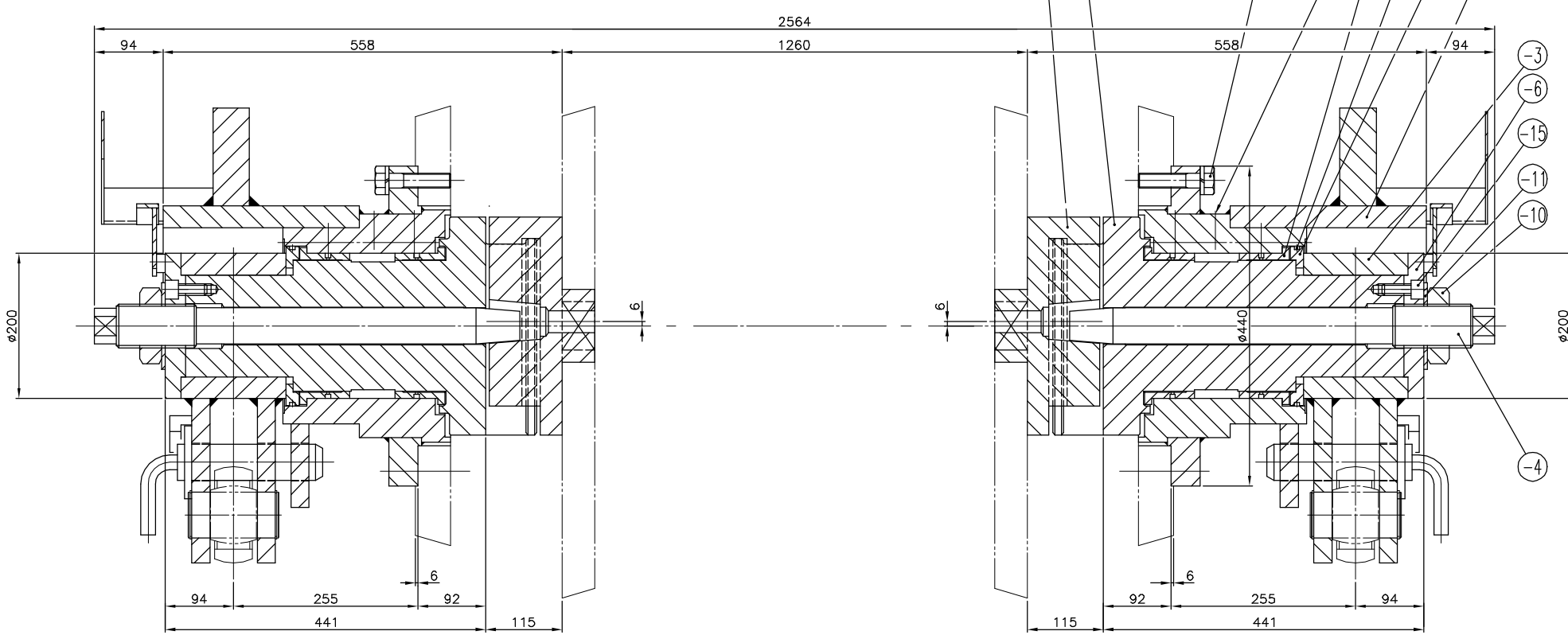


SCALE		1/6		PROJECTION		A1	
SIZE		A1		DIMENSION		mm	
NO.		DATE		REVISION & DESCRIPTION		DRAWN	
24.11.20		FOR REFERENCE		S.C.PARK		- O.R.SONG K.S.SONG	
TITLE		HOPPER SYSTEM GAS SEAL HOPPER DETAIL OF WEAR PLATE CASING FOR DISTRIBUTION ROCKER		DRAWN		S.C.PARK	
24.11.20		-		O.R.SONG K.S.SONG		24.11.20	
ITEM MODEL NO.		FSP-FT-FG01-001		DRAWN		S.C.PARK	
MAKER DWG. NO.		214-M33-D7130		CHECKED		-	
REV. NO.		-		REVIEWED		24.11.20	
APPROVED		24.11.20		APPROVED		24.11.20	

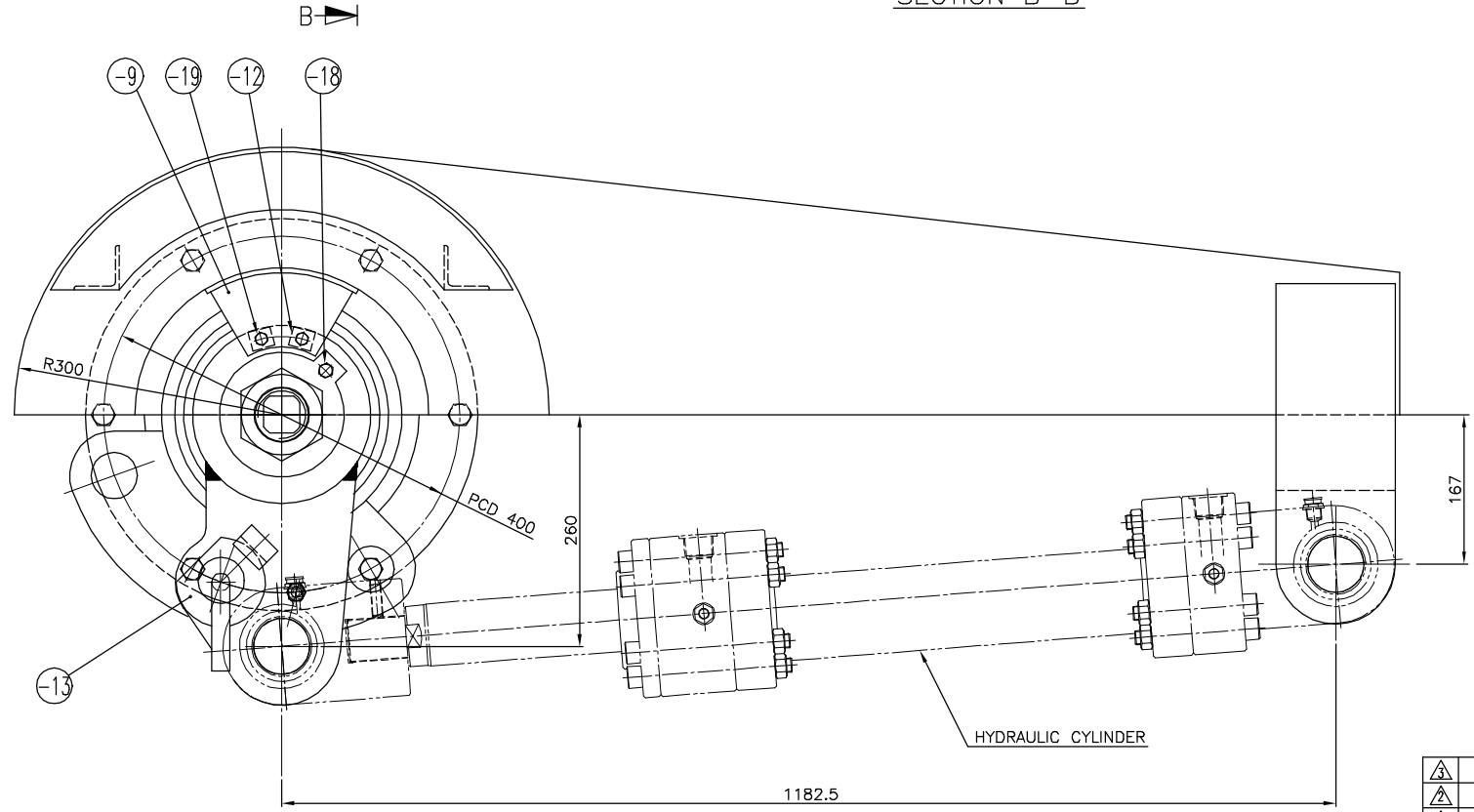


?? ???? C = 0.3-0.8 R = 0.3-0.8	?? ???? Ra	?? ???? Rmax	?? ???? 0.45	?? ???? 0.85	?? ???? 1.65	?? ???? 3.25	?? ???? 6.35	?? ???? 12.55	?? ???? 255	?? ???? 505	?? ???? 1005
?? ???? KSB ISO 2768-1	?? ???? KSB 0161, 0507, 0617	?? ???? Ra	0.4	0.2	0.4	0.8	1.6	3.2	6.3	12.5	25

⑥ OPPOSITE HAND TO MARK ⑤



SECTION B-B



VIEW A

NO.	DESCRIPTION	MAT'(KS)	QUANTITY		WEIGHT(KG)		REMARK'S
			UNIT	TOTAL	PERUNIT	TOTAL	
5	DRIVE UNIT ASS'Y (A)			1SET		450.6	
-1	BODY			1	293.1		
-2	SHAFT	SCM440		1	65		
-3	ARM			1	34.2		
-4	GUIDE SHAFT	SCM440		1	9		
-5	COUPLING	SM45C		1	30		
-6	COVER	SM45C		1	4.9		
-7	BUSH	BC3		1	1.7		
-8	BUSH	BC3		2	3.2	6.4	
-9	CAME	SS400		1	1.2		
-10	HEX. NUT	SM25C		1	0.8		
-11	WASHER	STS304		1	0.5		
-12	PLATE	STS304		2	0.1	0.2	
-13	LOCK PIN	SM25C		1	3.6		
-14	O-RING	G210 N.B.R		1			
-15	HEX. SOCKET BOLT	M16x40L SCM440		4			
-16	HEX. BOLT	M20x90L SM25C		6			
-17	SPRING WASHER 20	HSWR57A		6			
-18	HEX. BOLT & S/W	M12x25L SM25C + HSWR57A		1			
-19	HEX. BOLT & S/W	M8x40L SM25C + HSWR57A		2			
-20	PLUG	G 1/4 SM25C		2			
6	DRIVE UNIT ASS'Y (B)			1SET		450.6	

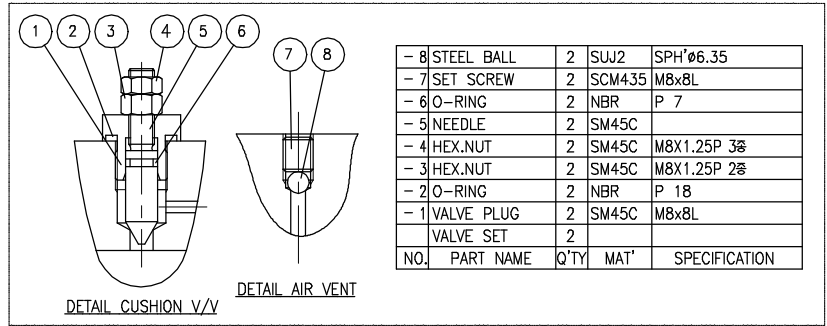
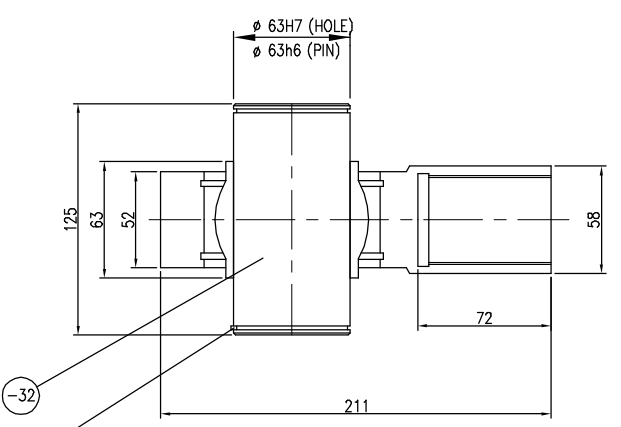
SCALE 1/4		PROJECTION		ITEM MODEL NO. 2140		MAKER DWG. NO. 214-M34-D3660	
TITLE		HOPPER SYSTEM GAS SEAL HOPPER DRIVE UNIT ASS'Y FOR DISTRIBUTION ROCKER		DRAWN S.C.PARK		CHECKED O.R.SONG	
DATE 24.11.20		REVISION & DESCRIPTION FOR REFERENCE		DRAWN S.C.PARK		CHECKED O.R.SONG	
NO.		DATE		REVISION & DESCRIPTION		DRAWN	
24.11.20		-		FOR REFERENCE		S.C.PARK	
24.11.20		-		24.11.20		24.11.20	



KSB ISO 2768-1		KSB 0161, 0507, 0617														
0.5	6	30	120	400	1000	2000	Ra	0.4S	0.8S	1.6S	3.2S	6.3S	12.5S	25S	50S	100S
±0.1	±0.2	±0.3	±0.5	±0.8	±1.2	±2.0	???	???	???	???	???	???	???	???	???	???

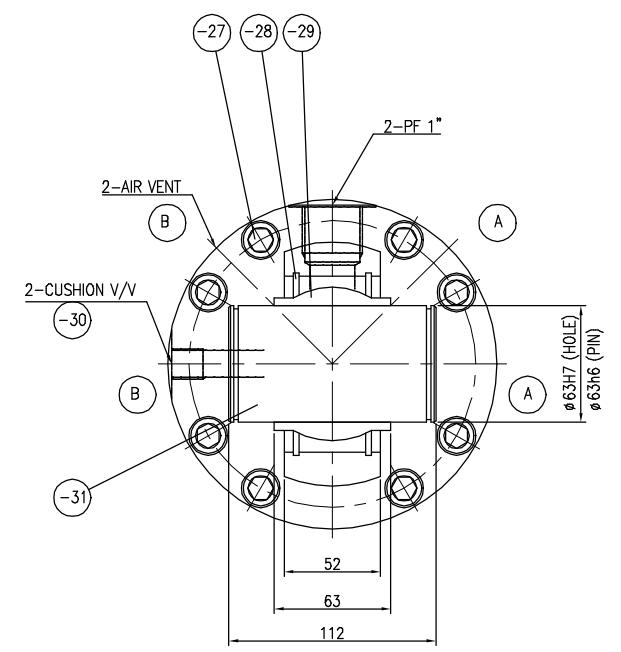
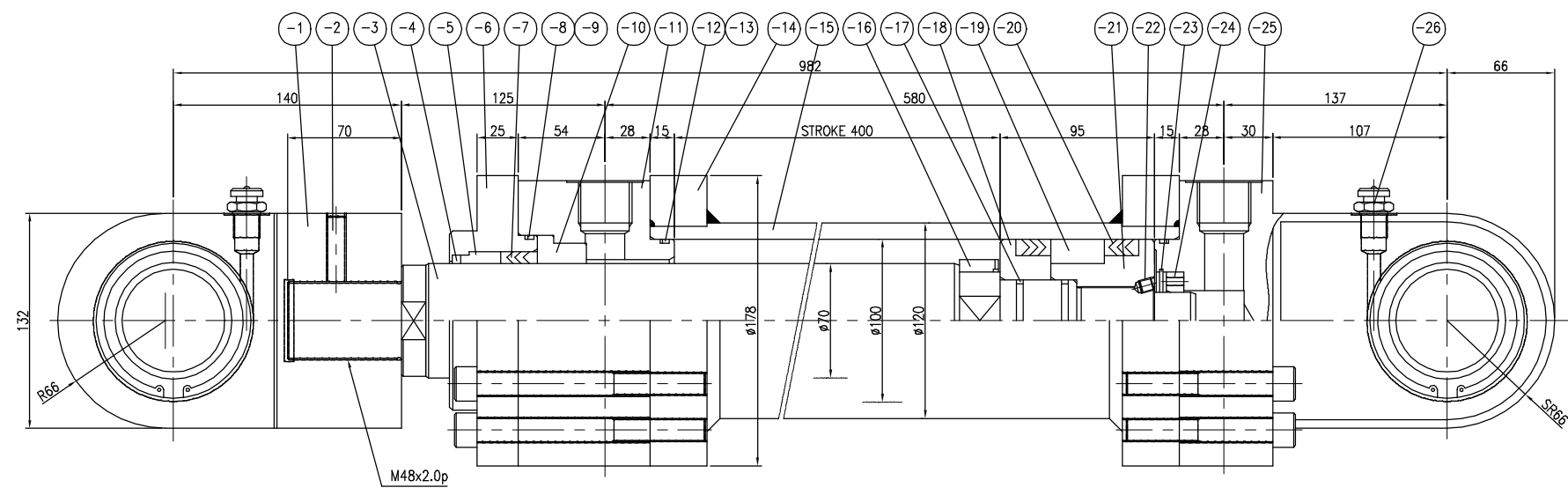
⑦ HYDRAULIC CYLINDER ASS'Y

CYL'D BORE	∅ 100 mm	PAINTING SPEC'	
ROD DIAMETER	∅ 70 mm	COLOR	MUNSEL 2.5G 6/2
STROKE	400 mm		
RATED PRESSURE	250 kgf/cm ²		
PROOF PRESSURE	350 kgf/cm ²		
WORKING FLUID	MINERAL OIL		
STOCK NO.	-		



NO.	DESCRIPTION	MAT'(KS)	QUANTITY		WEIGHT(KG)		REMARK'S	공급 구분
			UNIT	TOTAL	PERUNIT	TOTAL		
7	HYDRAULIC CYLINDER		SET	1	-	90		PE
-1	ROD END	SS275	EA	1	-	-		PE
-2	SET SCREW	SCM435	EA	1	-	-	M12x1.75P-40L	PE
-3	ROD	SM45C	EA	1	-	-		PE
-4	DUST SEAL	URETHAN	EA	1	-	-	8090-004.881	PE
-5	BUSH ADAPTER (1)	BC6	EA	1	-	-		PE
-6	RETAINER	SS275	EA	1	-	-		PE
-7	ROD PACKING	N.B.R	EA	1	-	-	0001-070.196	PE
-8	O-RING	N.B.R	EA	1	-	-	1B-G100	PE
-9	BACK UP RING	PTFE	EA	1	-	-	FOR G100	PE
-10	BUSH ADAPTER (2)	BC6	EA	1	-	-		PE
-11	ROD COVER	SS275	EA	1	-	-		PE
-12	O-RING	N.B.R	EA	2	-	-	1B-G95	PE
-13	BACK UP RING	PTFE	EA	2	-	-	FOR G95	PE
-14	TUBE FLANGE	SS275	EA	2	-	-		PE
-15	TUBE	STKM13C	EA	1	-	-		PE
-16	CUSHION RING	BC6	EA	1	-	-		PE
-17	O-RING & BACK UP RING	N.B.R/PTFE	SET	2	-	-	1B-G45,(13)G45	PE
-18	PISTON (1)	SS275	EA	2	-	-		PE
-19	PISTON BUSH	BC6	EA	1	-	-		PE
-20	PISTON PACKING	N.B.R	EA	2	-	-		PE
-21	PISTON (2)	SS275	EA	1	-	-		PE
-22	SET SCREW	SCM435	EA	1	-	-		PE
-23	STOP RING	SK5	EA	1	-	-		PE
-24	CUSHION GUIDE	BC6	EA	1	-	-		PE
-25	HEAD COVER	SS275	EA	1	-	-		PE
-26	GREASE NIPPLE	PUR.	EA	2	-	-	PF 3/8	PE
-27	S.H.C.S	SCM435	SET	8	-	-	M14x2P-140L, 90L	PE
-28	STOP RING	SK5	EA	4	-	-	FOR #95	PE
-29	SPHERICAL BEARING	PUR.	EA	2	-	-	GE 63 LO	PE
-30	VALVE SEAT	-	EA	2	-	-		PE
-31	PIN	SM45C	EA	1	-	-	#63x112L	PE
-32	PIN	SM45C	EA	2	-	-	#63x125L	PE
-33	SNAP RING	STC5	EA	4	-	-	C-TYPE, #63	PE

TOTAL WEIGHT : 90(Kg)X2SET=180(Kg)



NOTE
 1. ROD SURFACE & TUBE BORE HARD CHROMIUM PLATING : MIN. THICKNESS 0.020
 2. V/V 위치는 A, B 각 1 SET 제작 할것.

SCALE 1/2		PROJECTION	
SIZE A1		DIMENSION mm	
TITLE HOPPER SYSTEM GAS SEAL HOPPER DETAIL OF HYDRAULIC CYLINDER			ITEM MODEL NO. FSP-FT-FG01-001
DRAWN S.C.PARK			MAKER 214-M33-D7180
CHECKED O.R.SONG			DWG. NO.
REVIEWED K.S.SONG			
APPROVED			
FINE INC. (주)파인			