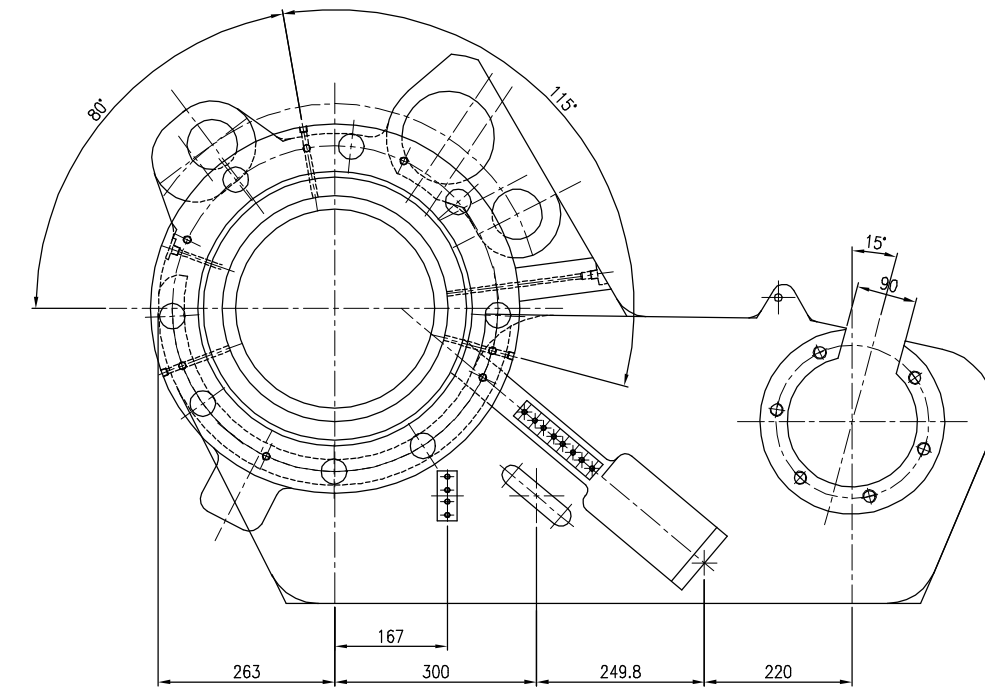
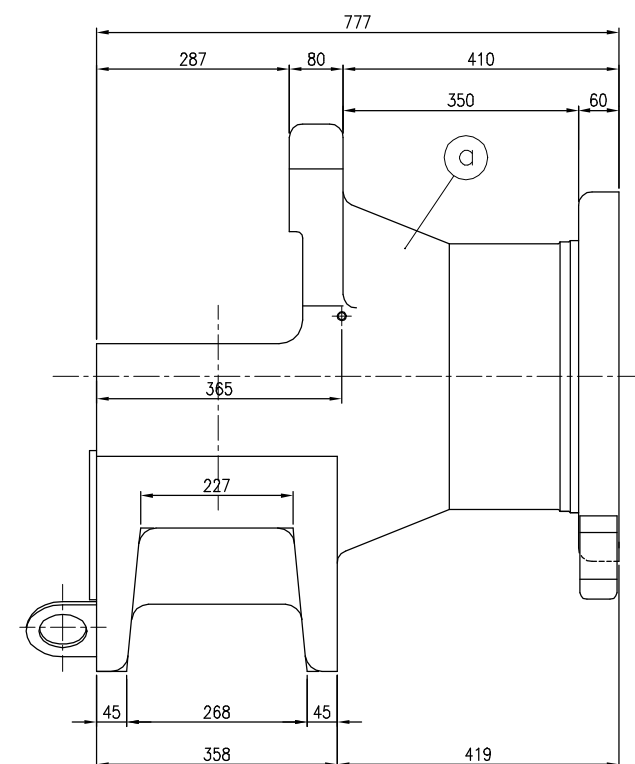
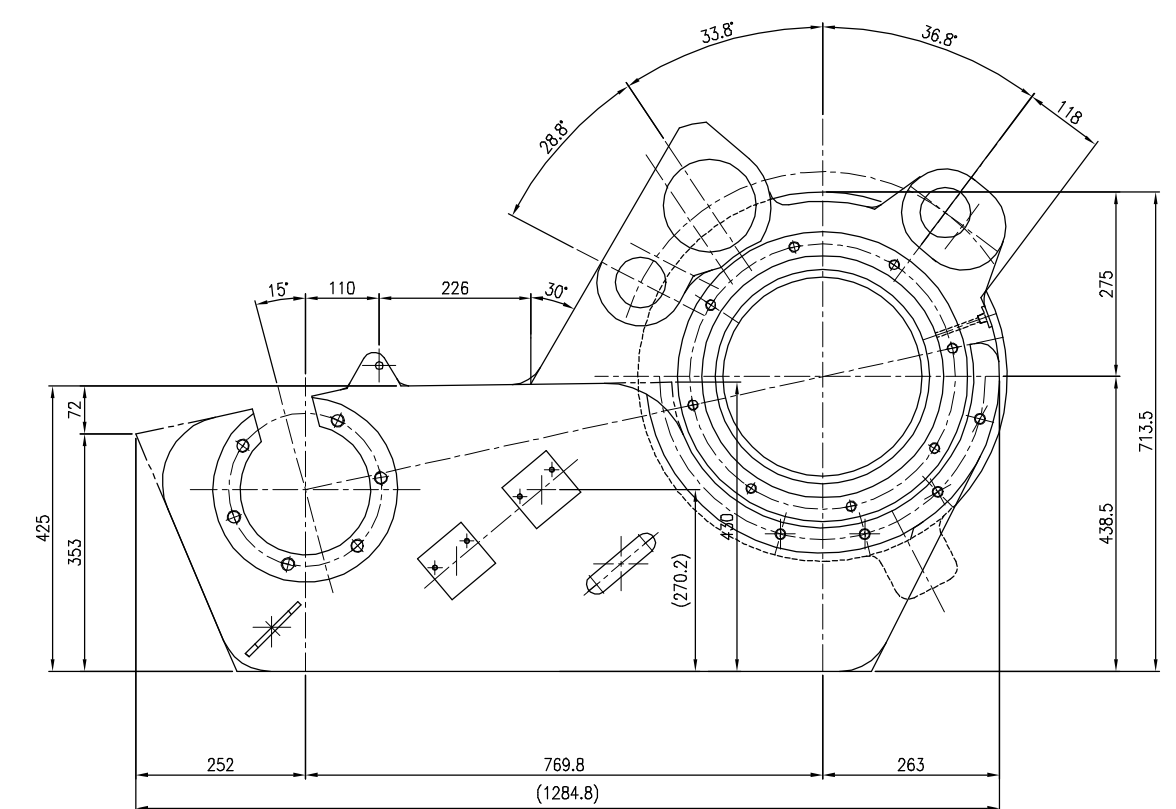
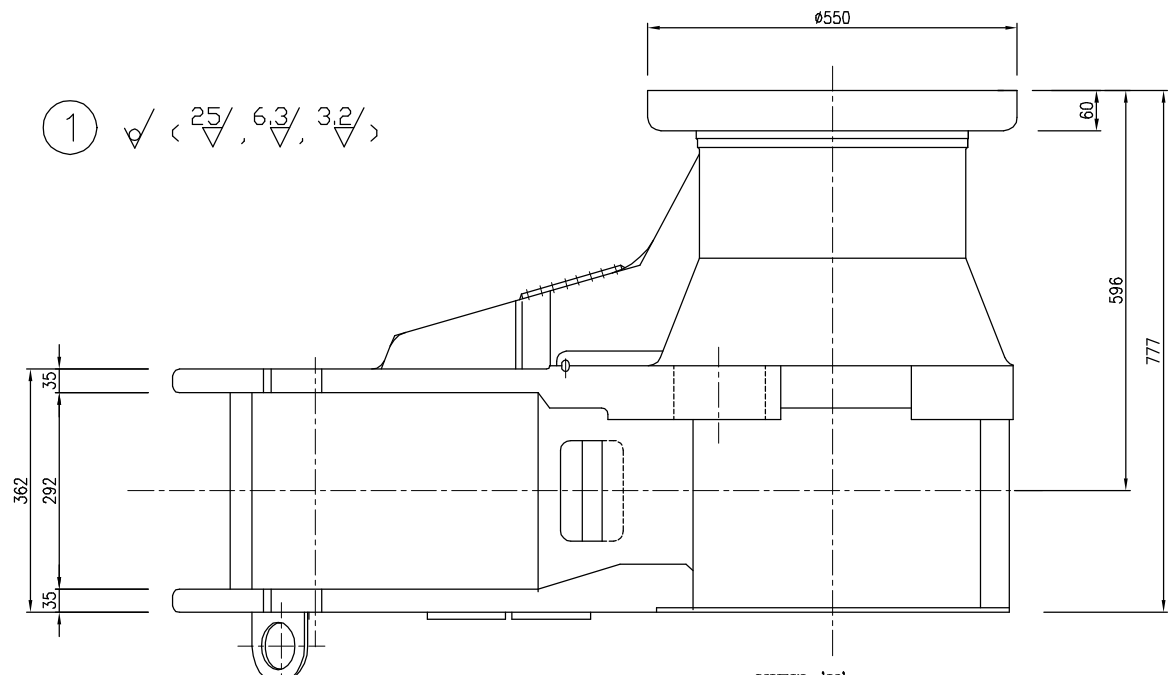


지시의 용량계수	지시의 모사리부분	지시의 일반계수 사용처 (KSB ISO 2768-1)								표면 거칠기 (KSB 0161, 0507, 0617)									
		구분	0.5 ~ 6	6 ~ 30	30 ~ 120	120 ~ 400	400 ~ 1000	1000 ~ 2000	2000 ~ 4000	Ra	0.4	0.8	1.6	3.2	6.3	12.5	25	50	100
지시의 일반 모사리 계기 C = 0.5~0.8 R = 0.5~0.8	필시 가공부	중간급	±0.1	±0.2	±0.3	±0.5	±0.8	±1.2	±2.0	다듬질	▽	▽▽	▽▽▽	▽▽▽▽	▽▽▽▽▽	▽▽▽▽▽▽	▽▽▽▽▽▽▽	▽▽▽▽▽▽▽▽	▽▽▽▽▽▽▽▽▽

NO.	SPECIFICATION	MATERIAL	UNIT	Q'TY	WEIGHT(KG)		REMARKS
					UNIT	TOTAL	
1	CASING		SET	1	-	820	
a	BODY	SC460	EA	1	-	818	
b	PLATE (t10X80X85)	SS400	EA	2	0.5	1	
c	PLATE (t7X105X110)	SS400	EA	1	-	0.6	
d	PLATE (t7X30X148)	SS400	EA	1	-	0.4	
e	PLATE (t5X30X74)	SS400	EA	1	-	-	
f	PLUG	SM25C	EA	3	-	-	G 1/8
g	PLUG	SM25C	EA	3	-	-	G 1/4

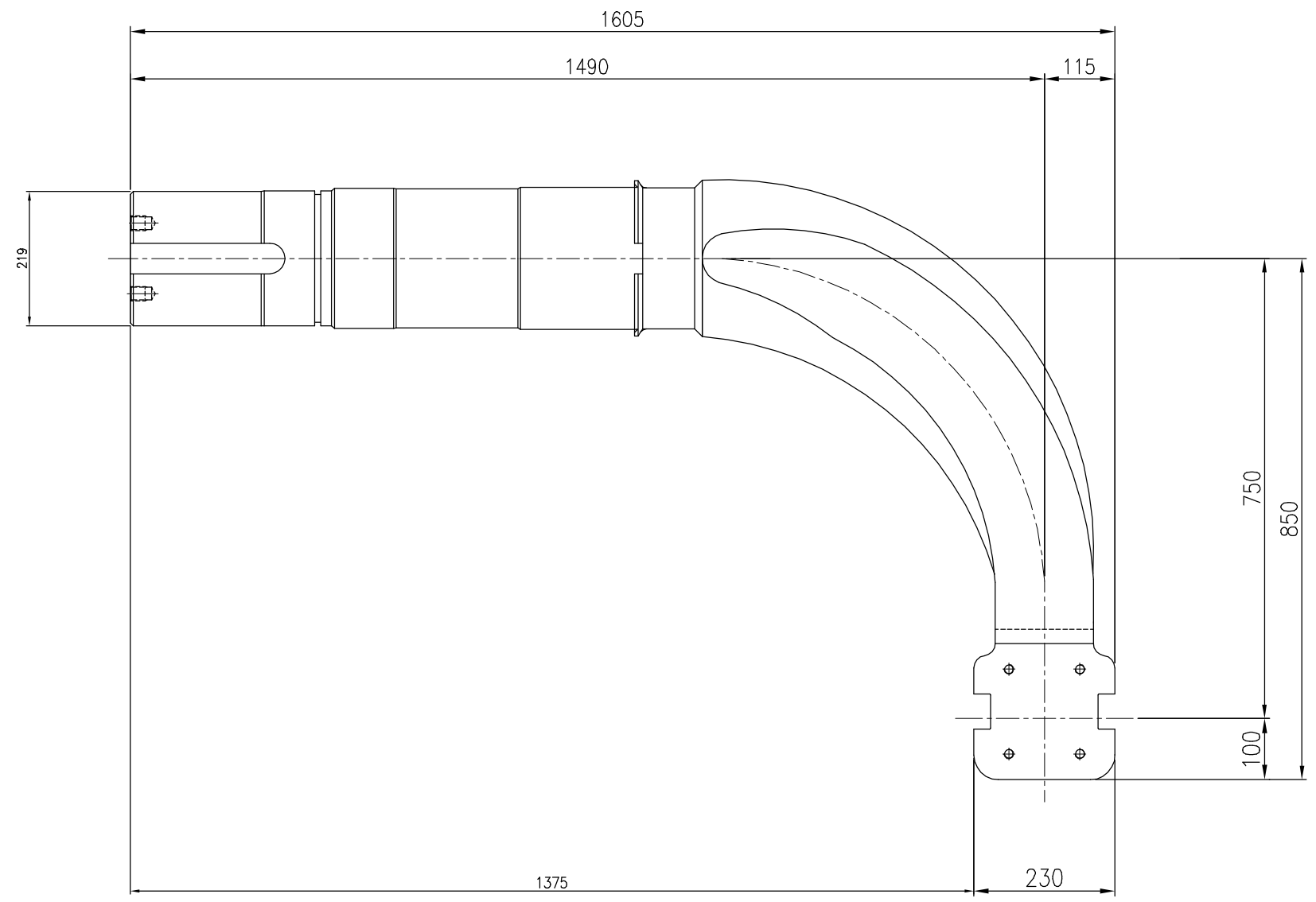
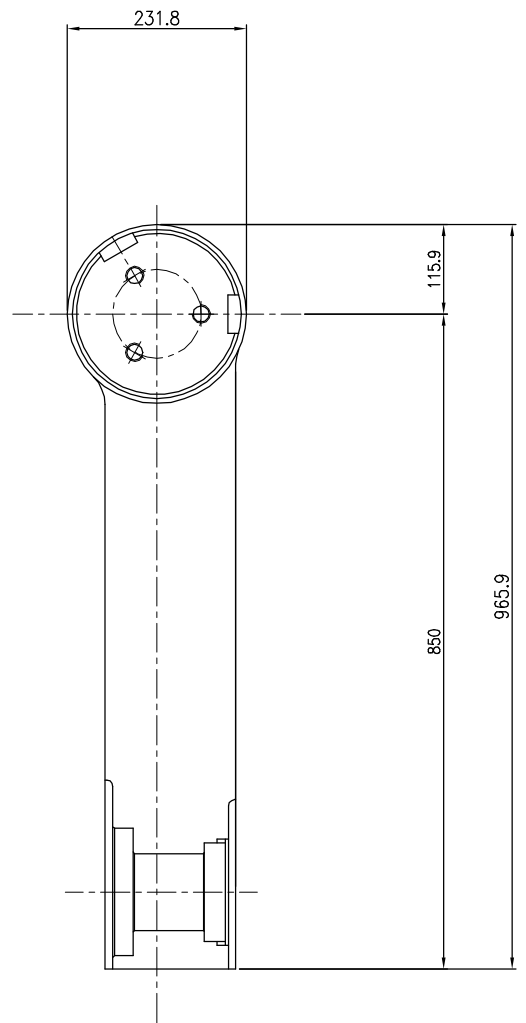


SCALE		1/11	PROJECTION	1st Angle
SIZE		A3	DIMENSION	mm
TITLE		HOPPER SYSTEM DETAIL CASING OF LOWER & UPPER SEAL VALVE (1/2)		
PLANT		FSP-FT-SV01-001		
FACILITY		214-M34-D2520		
NO.	DATE	REVISION & DESCRIPTION	DRAWN	CHECKED
24.11.20		FOR REFERENCE	S.C.PARK	O.R.SONG
			K.S.SONG	
DRAWN		CHECKED	REVIEWED	APPROVED
S.C.PARK		O.R.SONG	K.S.SONG	
24.11.20		24.11.20	24.11.20	



지시의 용접치수	지시의 모사리부분	지시의 일반치수 사용처 (KSB ISO 2768-1)								표면 거칠기 (KSB 0161, 0507, 0617)							
		구분	0.5 ~ 6	6 ~ 30	30 ~ 120	120 ~ 400	400 ~ 1000	1000 ~ 2000	2000 ~ 4000	Ra	▽	▽	▽	▽	▽	▽	▽
지시의 일반 치수 C = 0.5~0.8 R = 0.5~0.8	필수 가공부	중간급	±0.1	±0.2	±0.3	±0.5	±0.8	±1.2	±2.0	다듬질	▽	▽	▽	▽	▽	▽	▽

② 25/▽(▽/▽, 6.3/3.2/▽)



WEIGHT : 597 Kg

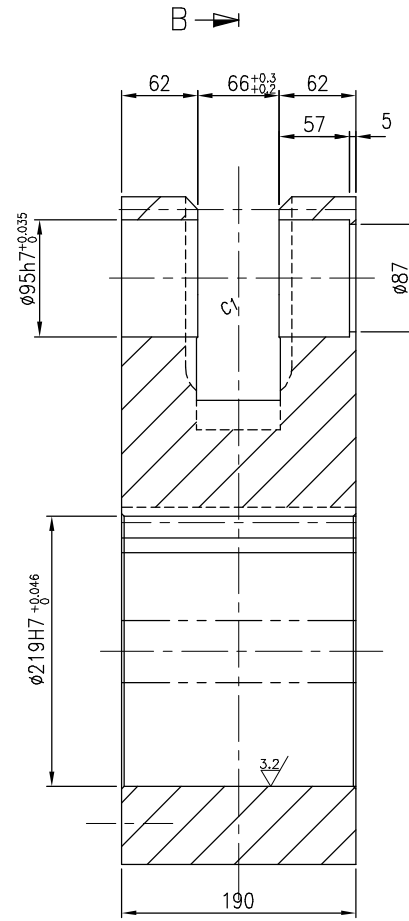
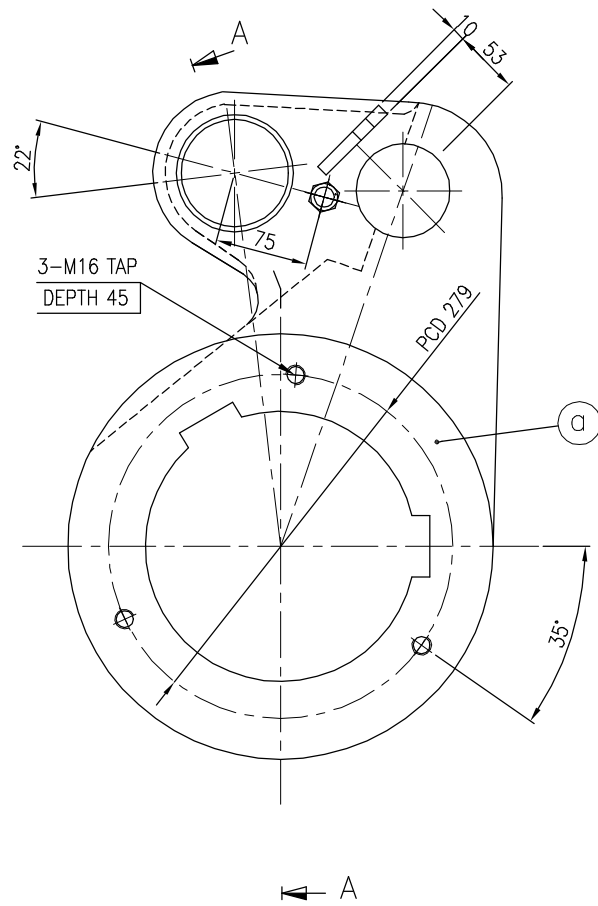
										SCALE	1/12	PROJECTION	1st	
										SIZE	A1	DIMENSION	mm	
										ITEM MODEL NO.	FSP-FT-SV01-001			
										MAKER DWG. NO.	214-M34-D2540			
NO.	DATE	REVISION & DESCRIPTION	DRAWN	CHECKED	REVIEWED	APPROVED	TITLE	PLANT FACILITY	HOPPER SYSTEM DETAIL OF LEVER FOR LOWER & UPPER SEAL VALVE					
	24.11.20	FOR REFERENCE	S.C.PARK	-	O.R.SONG	K.S.SONG								
FINE INC. (주) 파인										DRAWN	CHECKED	REVIEWED	APPROVED	DWG. NO.
FINE INC.										S.C.PARK	-	O.R.SONG	K.S.SONG	-
										24.11.20	-	24.11.20	24.11.20	

지시의 용접치수	지시의 모서리부분	지시의 일반치수 허용치 (KSB ISO 2768-1)							표면 거칠기 (KSB 0161, 0507, 0617)											
		구분	0.5 ~ 6	6 ~ 30	30 ~ 120	120 ~ 400	400 ~ 1000	1000 ~ 2000	2000 ~ 4000	Ra	▽	▽	▽	▽	▽	▽	▽	▽	▽	▽
지시의 일반 치수 C = 0.5~0.8 R = 0.5~0.8	필수 가공부	종간급	±0.1	±0.2	±0.3	±0.5	±0.8	±1.2	±2.0	다듬질	▽	▽	▽	▽	▽	▽	▽	▽	▽	▽
											0.4S	0.8S	1.6S	3.2S	6.3S	12.5S	25S	50S	100S	

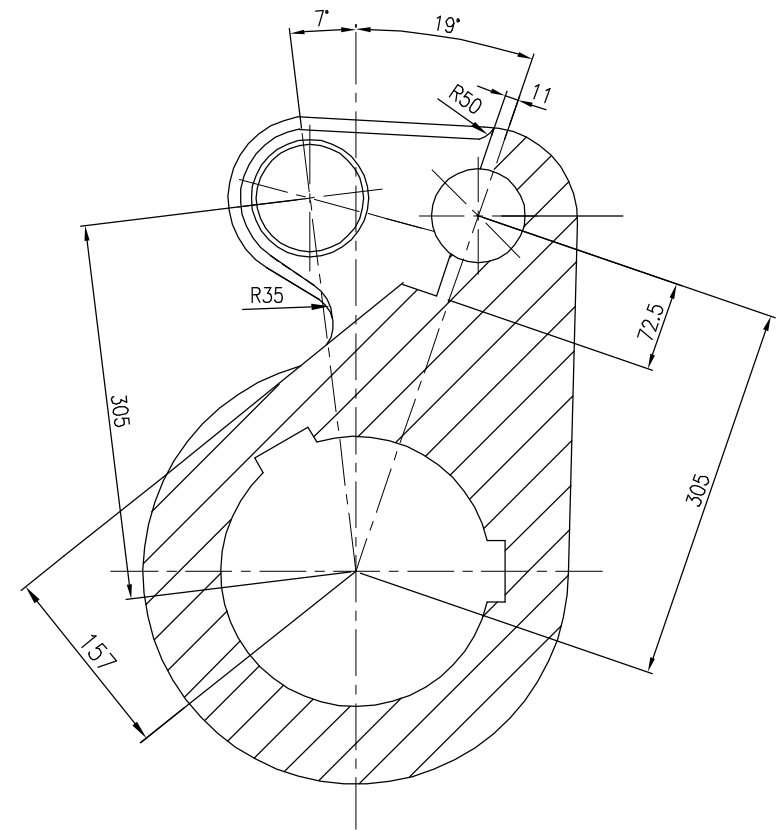
NO.	SPECIFICATION	MATERIAL	UNIT	Q'TY	WEIGHT(KG)		REMARKS
					UNIT	TOTAL	
e	PLAIN WASHER	SS400	1	-	-	-	FOR M16
d	HEX.NUT	SM20C	1	-	-	-	M16
c	HEX.BOLT	SM25C	1	-	-	-	M18X348X40L
b	PLATE(110X50X70)	SS400	1	-	0.2	-	
a	PLATE(1190)	SCM440	1	-	143	-	
3	LEVER		1	-	-	143.2	

TOTAL WEIGHT : 143.2 Kg

③  $\nabla / ( \nabla , \nabla )$



SECTION 'A-A'



SECTION 'B-B'

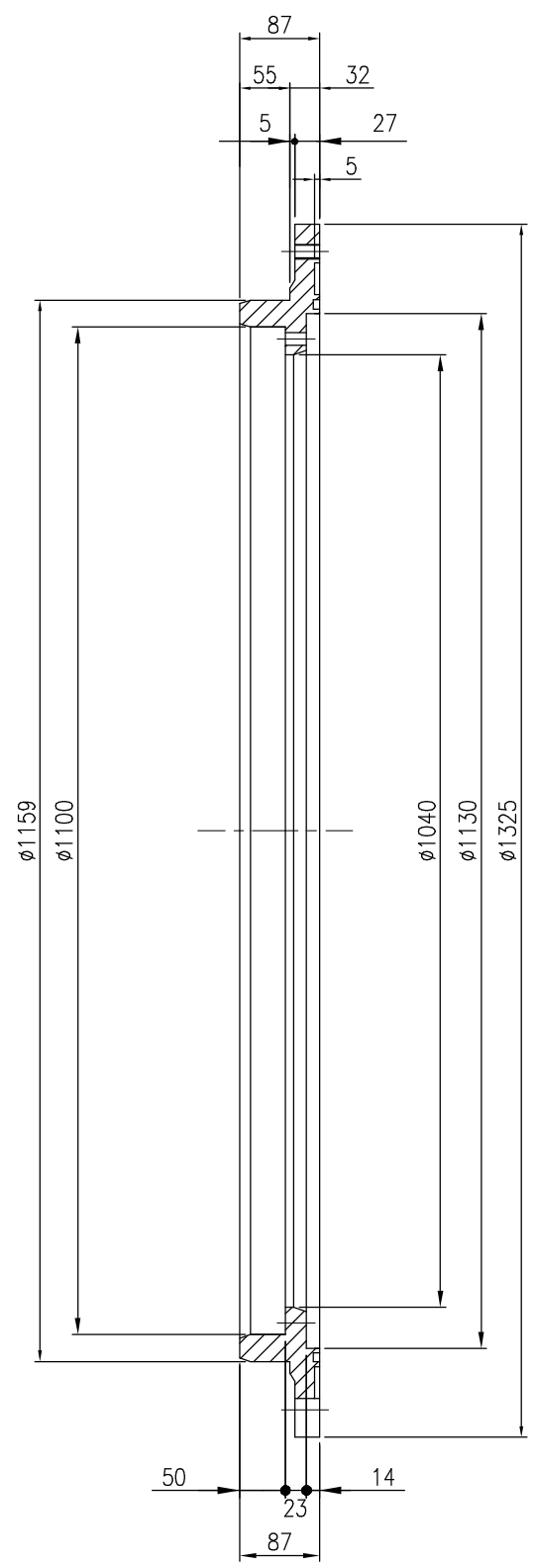
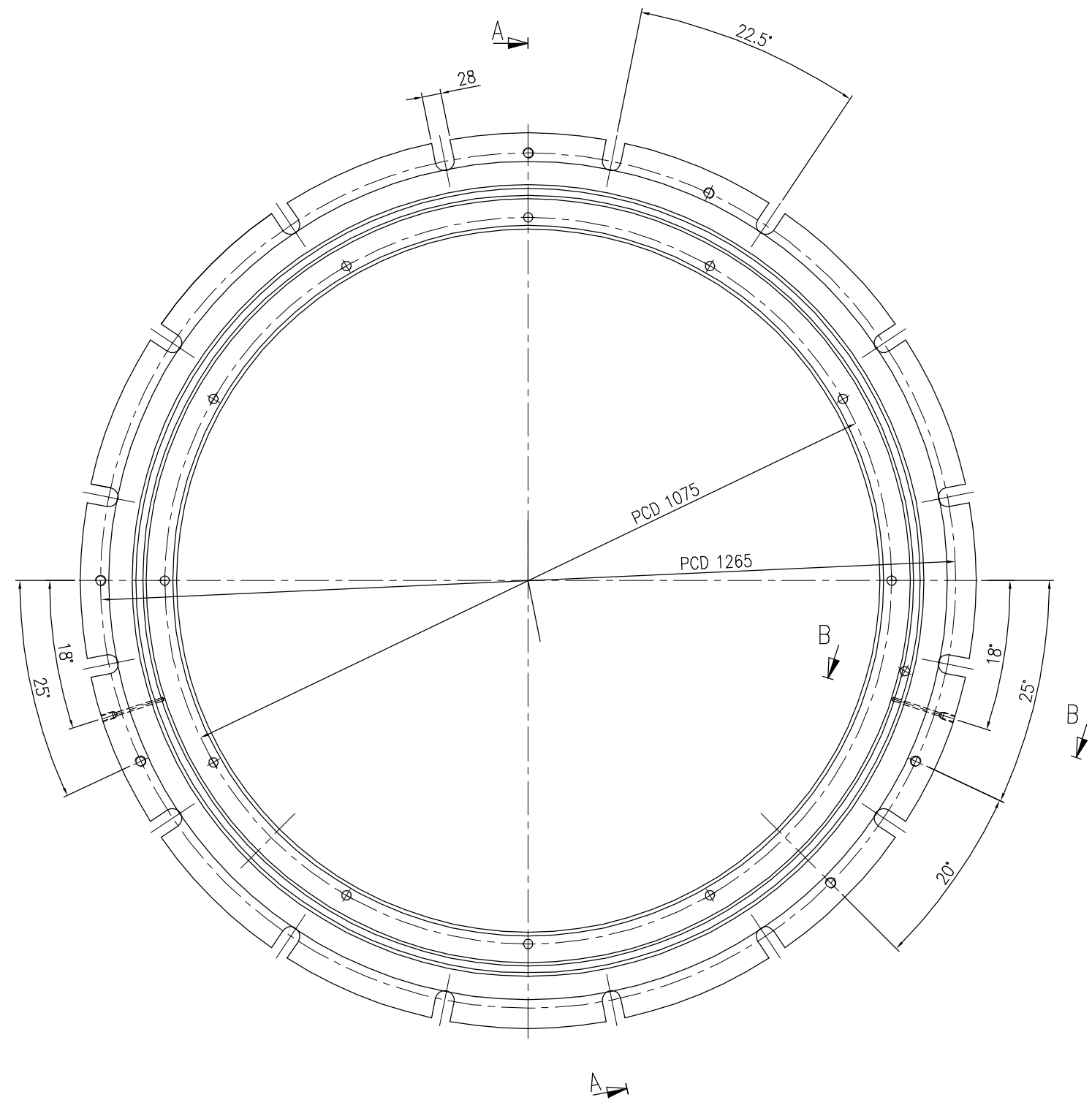
NO.	DATE	REVISION & DESCRIPTION	DRAWN	CHECKED	REVIEWED	APPROVED	TITLE	PLANT	FACILITY	SCALE	1/3	PROJECTION	ITEM MODEL NO.	MAKER DWG. NO.
	24.11.20	FOR REFERENCE	S.C.PARK	-	O.R.SONG	K.S.SONG	HOPPER SYSTEM DETAIL OF LEVER ARM FOR LOWER & UPPER SEAL VALVE			A3	mm	FSP-FT-SV01-001	214-M34-D2550	
										DRWN	CHECKED	REVIEWED	APPROVED	DWG. NO.
										S.C.PARK	-	O.R.SONG	K.S.SONG	-
										24.11.20	-	24.11.20	24.11.20	-



지시의 용량치수	지시의 모서리부분	지시의 일반치수 사용치 (KSB ISO 2768-1)							표면 거칠기 (KSB 0161, 0507, 0617)										
		구분	0.5 ~ 6	6 ~ 30	30 ~ 120	120 ~ 400	400 ~ 1000	1000 ~ 2000	2000 ~ 4000	Ra	0.1	0.2	0.4	0.8	1.6	3.2	6.3	12.5	25
지시의 일반 치수 C = 0.5~0.8 R = 0.5~0.8	필시 가공부	종간급	±0.1	±0.2	±0.3	±0.5	±0.8	±1.2	±2.0	다듬질	▽	▽▽	▽▽▽	▽▽▽▽	▽▽▽▽▽	▽▽▽▽▽▽	▽▽▽▽▽▽▽	▽▽▽▽▽▽▽▽	▽▽▽▽▽▽▽▽▽

NO.	SPECIFICATION	MATERIAL	UNIT	Q'TY	WEIGHT(KG)		REMARKS
					UNIT	TOTAL	
21	SEAL VALVE SEAT	SS400+HF	-	-	-	137.2	

A  
B  
C  
D  
E  
F



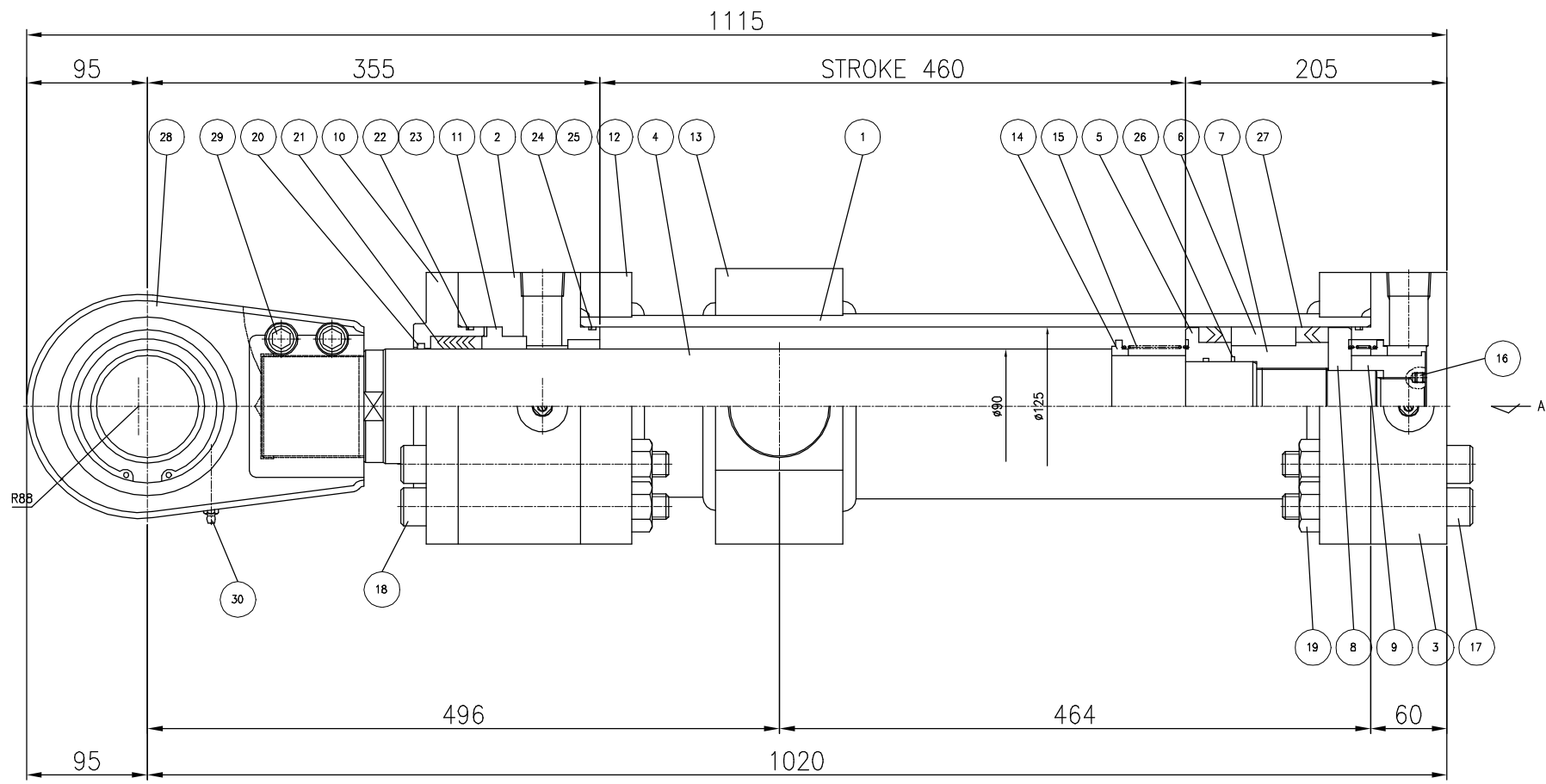
SECTION "A-A"

NO.		DATE		REVISION & DESCRIPTION		DRAWN	CHECKED	REVIEWED	APPROVED	TITLE		SCALE	PROJECTION														
24.11.20		24.11.20		FOR REFERENCE		S.C.PARK	-	O.R.SONG	K.S.SONG	HOPPER SYSTEM DETAIL OF SEAT FOR LOWER & UPPER SEAL VALVE		1/4	A1														
<table border="1"> <tr> <td>SCALE</td> <td>1/4</td> <td>PROJECTION</td> <td></td> </tr> <tr> <td>SIZE</td> <td>A1</td> <td>DIMENSION</td> <td>mm</td> </tr> <tr> <td>ITEM MODEL NO.</td> <td colspan="2">FSP-FT-SV01-001</td> <td></td> </tr> <tr> <td>MAKER DWG. NO.</td> <td colspan="2">214-M34-D2620</td> <td></td> </tr> </table>												SCALE	1/4	PROJECTION		SIZE	A1	DIMENSION	mm	ITEM MODEL NO.	FSP-FT-SV01-001			MAKER DWG. NO.	214-M34-D2620		
SCALE	1/4	PROJECTION																									
SIZE	A1	DIMENSION	mm																								
ITEM MODEL NO.	FSP-FT-SV01-001																										
MAKER DWG. NO.	214-M34-D2620																										
<table border="1"> <tr> <td>DRWN</td> <td>CHEK</td> <td>REVIEW</td> <td>APPROV</td> </tr> <tr> <td>S.C.PARK</td> <td>-</td> <td>O.R.SONG</td> <td>K.S.SONG</td> </tr> <tr> <td>24.11.20</td> <td>-</td> <td>24.11.20</td> <td>24.11.20</td> </tr> </table>										DRWN	CHEK	REVIEW	APPROV	S.C.PARK	-	O.R.SONG	K.S.SONG	24.11.20	-	24.11.20	24.11.20	<table border="1"> <tr> <td>NO.</td> <td>NO.</td> </tr> <tr> <td>-</td> <td>-</td> </tr> </table>		NO.	NO.	-	-
DRWN	CHEK	REVIEW	APPROV																								
S.C.PARK	-	O.R.SONG	K.S.SONG																								
24.11.20	-	24.11.20	24.11.20																								
NO.	NO.																										
-	-																										



지사의 용량계수	지사의 모서리부분	지사의 일반계수 사용처 (KSB ISO 2768-1)								표면 거칠기 (KSB 0161, 0507, 0617)									
	지사의 일반 모서리 계수 C = 0.5~0.8 R = 0.5~0.8	형식	구분	0.5	6	30	120	400	1000	2000	Ra	0.4	0.8	1.6	3.2	6.3	12.5	25	
		중간값	±0.1	±0.2	±0.3	±0.5	±0.8	±1.2	±2.0	Rmax	0.45	0.85	1.65	3.25	6.35	12.55	25.5	50.5	100.5

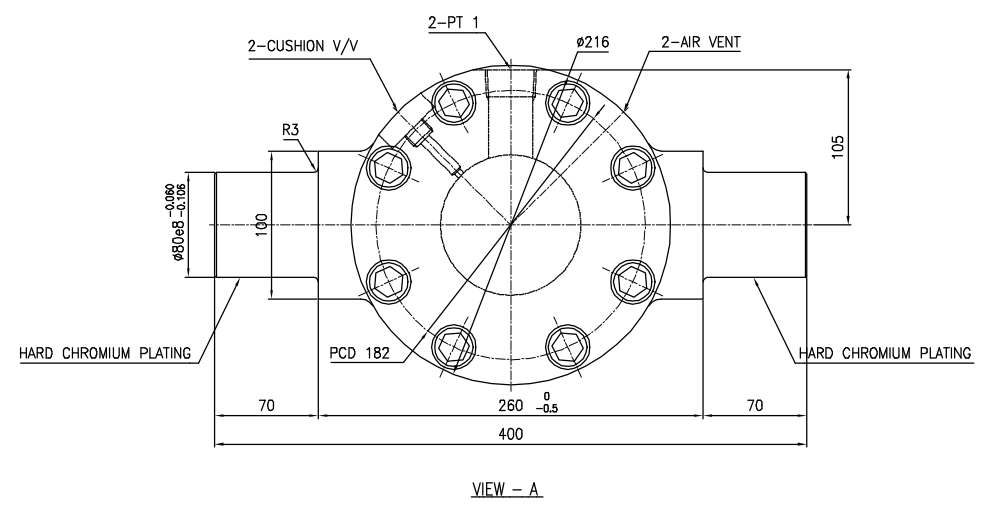
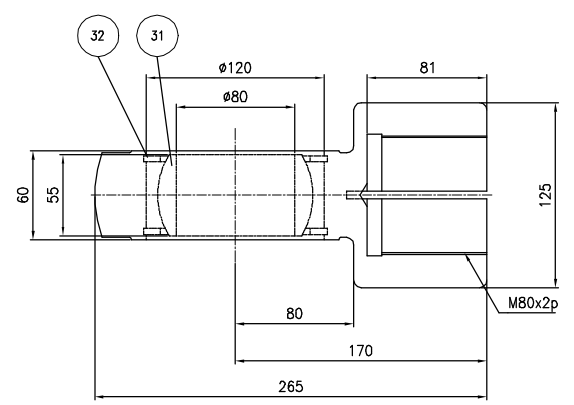
A  
B  
C  
D  
E  
F



NO.	SPECIFICATION	MATERIAL	UNIT	Q'TY	WEIGHT(KG)		REMARKS
					UNIT	TOTAL	
	HYDRAULIC CYLINDER		SET	4	227	908	
1	TUBE	STKM13C	EA	1			
2	ROD COVER	SS400	EA	1			
3	HEAD COVER	SS400	EA	1			
4	ROD	SM45C	EA	1			
5	PISTON-T	SM45C	EA	1			
6	PISTON BUSH	BC6	EA	1			
7	PISTON-B	SM45C	EA	1			
8	SUPPORT RING	SM45C	EA	1			
9	GUIDE NUT	SM45C	EA	1			
10	RETAINER	SS400	EA	1			
11	ROD BUSH	BC6	EA	1			
12	TUBE FLANGE	SS400	EA	2			
13	TRUNNION	SS400	EA	1			
14	SPRING SEAT	BC6	EA	2			
15	SPRING	SWPA	EA	2			
16	SET SCREW	SCM435	EA	1			M8
17	S.H.C.S	SCM435	EA	8			M20x130L
18	S.H.C.S	SCM435	EA	8			M20x190L
19	HEX. NUT	SM45C	EA	16			M20x2.5p
20	DUST SEAL	NBR	EA	1			B2511-004.92B
21	ROD PACKING	NBR	SET	1			B0008-107.195
22	O-RING	NBR	EA	1			G 120-1B
23	BACK UP RING	PTFE	EA	1			FOR G 120
24	O-RING	NBR	EA	2			G 120-1B
25	BACK UP RING	PTFE	EA	2			FOR G 120
26	O-RING	NBR	EA	2			G 70-1B
27	PISTON PACKING	NBR	SET	2			B0002-070.167
28	ROD END	FCD45	EA	1			
29	S.H.C.S	SCM435	EA	2			M16x50L
30	GREASE NIPPLE	STEEL	EA	1			PT 1/4
31	SPHERICAL BEARING	PURCH'	EA	1			GEB0ES
32	STOP RING	SK5	EA	2			FOR Ø120 HOLE
33	VALVE SET	-	SET	2			

TOTAL WEIGHT:908Kg

SPECIFICATION		
CYL'D BORE	Ø 125 MM	PAINTING SPEC' COLOR MUNSEL 2.5G 6/2
ROD DIAMETER	Ø 90 MM	
STROKE	460 MM	
RATED PRESSURE	250 kgf/cm <sup>2</sup>	
PROOF PRESSURE	375 kgf/cm <sup>2</sup>	
WORKING FLUID	MINERAL OIL	
STOCK NUMBER		



NOTE 1.TUBE BORE & TRUNNION ROD'S SURFACE : HARD CHROMIUM PLATING (MIN.THICKNESS 0.020)  
 2.T ROD'S SURFACE : HARD CHROMIUM PLATING (MIN.THICKNESS 0.050)

5	6	1	2	3	4
DETAIL OF AIR VENT V/V		DETAIL OF CUSHION VALVE			
-6	STEEL BALL	2	ISUJ2	SPH'Ø6.35	
-5	SET SCREW	2	SCM435		
-4	O-RING	2	NBR	P 4	
-3	NEEDLE	2	S45C		
-2	CUSHION PLUG	2	SUM24		
-1	VALVE SEAL	6	PTFE		
33	VALVE SET				
NO.	PART NAME	Q'TY	MAT'	SPECIFICATION	

SCALE	1/5	PROJECTION	☐
SIZE	A3	DIMENSION	mm
TITLE	PLANT FACILITY	HOPPER SYSTEM DETAIL OF HYD. CYLINDER FOR LOWER & UPPER SEAL VALVE	ITEM MODEL NO. FSP-FT-SV01-001
NO.	DATE	REVISION & DESCRIPTION	MAKER DWG. NO. 214-M34-D2630
24.11.20		FOR REFERENCE	
S.C.PARK	-	O.R.SONG	K.S.SONG
DRAWN	CHECKED	REVIEWED	APPROVED
S.C.PARK	-	O.R.SONG	K.S.SONG
24.11.20	-	24.11.20	24.11.20

